

Orbis and Tornado Mk II, and Vortex Torque Cell Check Calibration Rig



Checks gauge torque cells



Checks Vortex torque sensors



Mass Kit



432-621 Check Rig components

Check Calibration Rig (Orbis, Tornado, Vortex)

The check calibration rig is a bench-top unit which allows the on-site verification of the calibration status of Orbis MkII, Tornado MkII testers, and static torque sensors rated from 1.5 N.m to 10 N.m. Using dead-weight masses, the kit allows you to quickly decide whether or not adjustment, recalibration or repair is required. The kit does not replace the need for regular professional calibration.

Simple Check Adapter (Orbis, Tornado)

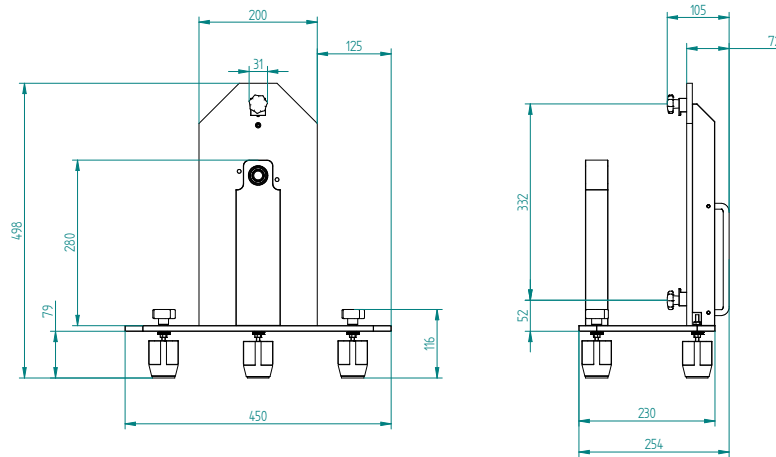
Orbis and Tornado may be simply checked for the need to be calibrated by use of the Simple Check Adapter in combination with a Mecmesin 'Smart' TS Screwdriver and AFTI/VFTI display. It is recommended to reserve the TS Screwdriver for this purpose only, not as a general instrument which may suffer overload and drift with regular use.

Specifications

Part No.	Description
432-621	Orbis and Tornado Mk II, and Vortex Torque Cell Check Calibration Rig
PDV21177	Orbis and Tornado 3/8" Simple Check Adapter

Check Calibration Rig - dimensions mm (inch)

432-621



PDV21177 Simple Check Adapter Use

The Simple Check Adapter is positioned centrally between the 4 pegs of the Orbis/Tornado. Torque is applied manually by the operator to a set limit. The value of torque applied is shown on the AFTI display and is compared to the value displayed on the Orbis/Tornado. In case of significant discrepancy the Orbis/Tornado should undergo a full calibration at an authorised laboratory.



PDV21177 + TS Screwdriver attachment



PDV21177 + TS Screwdriver & AFTI checking Tornado

Mecmesin reserves the right to alter equipment specifications without prior notice. E&OE.