

## Testing Doors: Safety & Compliance

Force measurement is an important technique for evaluating the performance of doors in terms of **safety** and **ergonomics**.

Door and hardware testing is subject to legislation e.g. Disability Discrimination Act.

A Mecmesin Manual Handling Kit enables you to:

- Measure the force that an operator must apply to a manually-operated or power-assisted door
- Measure the force that a manually-operated or power-assisted door might strike a bystander
- Conform to relevant standards

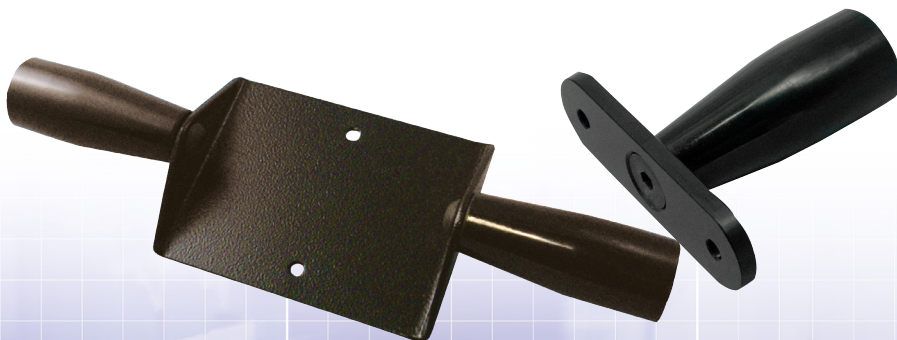
With handheld testing applications suitable accessories are vital for measuring critical forces safely and effectively.



### safety

The 'pistol grip' is the ideal accessory for measuring application of compressive load with a single hand or with both hands. Similarly the 'force gauge cradle' enables tensile or compressive load applied with both hands to be measured.

### ergonomics



## Ergonomics

The **ergonomic implications** are covered by the Disability Discrimination Act. Businesses and organisations providing goods, facilities or services to the public are required to make reasonable adjustments to their premises to overcome physical barriers to access - and there is perhaps no more likely potential source of such a physical barrier than a door!

### Disability Discrimination Act physical barriers

Indeed recent years have seen an increase in the number of power-assisted doors which have been installed in hotels, restaurants, banks, GP's surgeries, libraries, leisure centres and local authority departments, to name but a few.



Once access has been gained to a building the physical effort required to operate a door can be critical, not only upon grounds of disability, but also upon grounds of safety.

### self-closing fire doors      invalid access doors emergency exit doors

**Force gauges** able to capture the maximum load required to operate a door have an important role to play in evaluating the performance of, for example: **self-closing fire doors**, **invalid access doors**, and **emergency exit doors**.



FS 58553

**Head Office - UK**  
**Mecmesin Limited**

w: [www.mecmesin.com](http://www.mecmesin.com)  
e: [sales@mecmesin.com](mailto:sales@mecmesin.com)

**North America**  
**Mecmesin Corporation**

w: [www.mecmesincorp.com](http://www.mecmesincorp.com)  
e: [info@mecmesincorp.com](mailto:info@mecmesincorp.com)

**France**  
**Mecmesin France**

w: [www.mecmesin.fr](http://www.mecmesin.fr)  
e: [contact@mecmesin.fr](mailto:contact@mecmesin.fr)

**Asia**  
**Mecmesin Asia Co., Ltd**

w: [www.mecmesinasia.com](http://www.mecmesinasia.com)  
e: [sales@mecmesinasia.com](mailto:sales@mecmesinasia.com)

**Germany**  
**Mecmesin GmbH**

w: [www.mecmesin.de](http://www.mecmesin.de)  
e: [info@mecmesin.de](mailto:info@mecmesin.de)

**China**  
**Mecmesin (Shanghai) Pte Ltd**

w: [www.mecmesin.cn](http://www.mecmesin.cn)  
e: [sales@mecmesin.cn](mailto:sales@mecmesin.cn)

DISTRIBUTOR STAMP

Mecmesin reserves the right to alter equipment specifications without prior notice. E&OE